

# HILDALE PUBLIC SCHOOLS COMMUNITY FORUM

**JANUARY 25 & FEBRUARY 20, 2017**

**A FINANCIAL UPDATE & A PLAN FOR THE FUTURE**



# **A FEW THINGS....**

**FIRST – THANK YOU!! FOR YOUR TIME!!!**

- **PLEASE SIGN-IN**
- **I WILL RUN THROUGH SOME INFO, THEN TIME FOR QUESTIONS/CONVERSATION**
- **THIS POWERPOINT AND THE RESULTS OF THIS MEETING WILL BE POSTED ON OUR WEBSITE UNDER THE DISTRICT TAB – GIVE ME A WEEK OR SO**

# **SO LET'S GET STARTED**

- **INTRODUCTIONS – ADMIN, BOARD,**
  - **JORDAN SMITH, FINANCIAL ADVISOR**
  - **JAY T BOYNTON, ARCHITECT**
  
- **PURPOSE: TO ENCOURAGE COMMUNICATION & PROVIDE INFO FOR THE UPCOMING BOND**

# STATE FINANCE ISSUES

- **1,000 MORE STUDENTS IN OKLA THIS YEAR OVER LAST; INCREASE FOR 8 YRS**
- **\$1.3 BILLION IN THE HOLE LAST YEAR**
  - **WHY? OIL & GAS; PERSONAL INCOME TAX REDUCED 2.5% IN 8 YRS; TAX INCENTIVES AND EXEMPTIONS; MOTOR VEHICLE CAP**
  - **USED ONE-TIME MONEY TO FILL THE GAP LAST YEAR – NOT AVAILABLE THIS YEAR**
  - **REMEMBER: WHEN OIL WAS \$100 BARREL, THEY STILL DIDN'T FULLY FUND EDUCATION**
  - **OTHERS ISSUES EXPECTED: TEACHER SALARY, ESA/VOUCHERS & CONSOLIDATION ARE NOT DEAD!!!**
- **RECEIVED OUR FIRST CUT MID-JAN FROM 1017 FUND**
  - **\$33,410 X 6 MOS = \$200,459 ++++++ COMMON ED TECH CUT ++++++ STATE AID DUE TO STATE BUDGET SHORTFALL/REVENUE FAILURE, ESTIMATED 4-6% FOR SCHOOLS**
  - **PROJECTED CUTS FOR HILLDALE: \$700,000**

**POLITICAL STATEMENT: YOU MUST BE INVOLVED WITH THOSE WHO ARE MAKING DECISIONS IN THE LEGISLATURE! 1/3 OF THE HOUSE & SENATE WAS REPLACED LAST FALL – WE MUST INSIST EDUCATION BE A PRIORITY!!!**

# JUST AN EXAMPLE OF LEGISLATION

## 2,148 BILLS FILED BY THURSDAY, 1/19/17

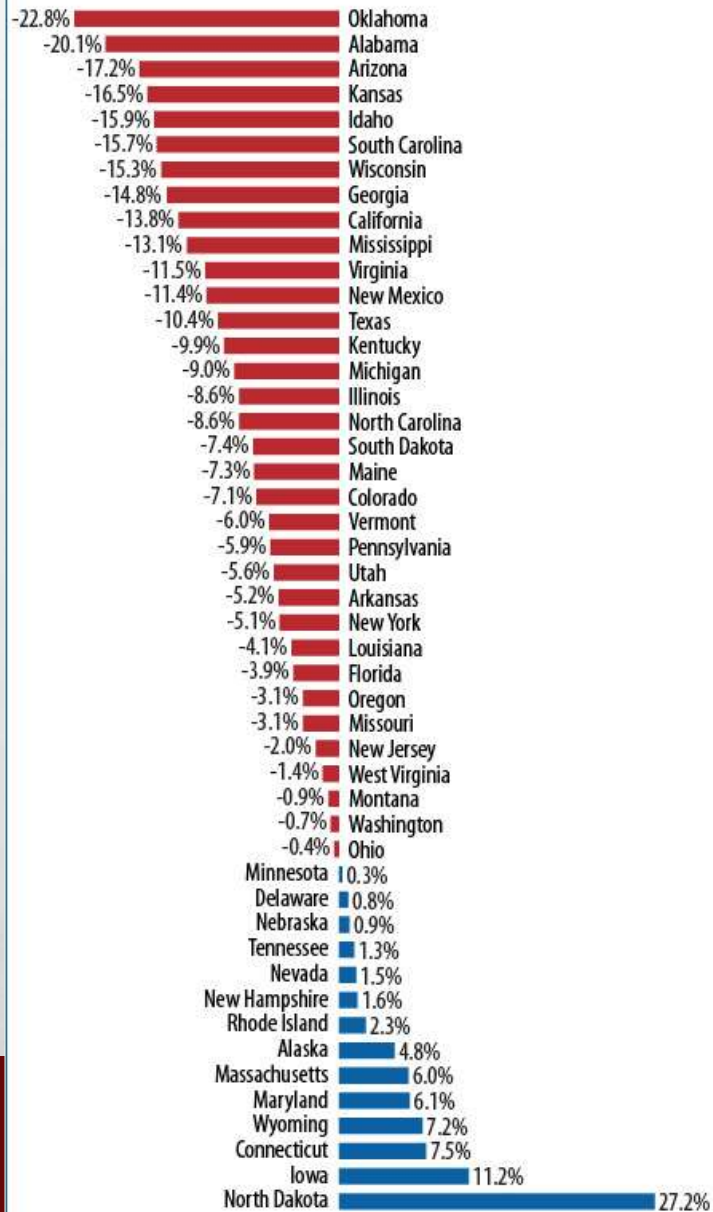
- SEN. DAVID HOLT – 12 BILLS, \$10,000 RAISE FOR TEACHERS, OVER 4 YEARS – COST \$550 MILLION
- SEN. KYLE LOVELESS – ESA “OKLAHOMA PARENTAL EMPOWERMENT ACT OF 2017”, SEN. ROB STANDRIDGE, SEN. JOHN SPARKS
  - **TUITION, TEXTBOOKS, TUTORING, ONLINE COURSES, EXTRACURRICULAR ACTIVITIES, UNIFORMS, TESTING FOR COLLEGE ENTRANCE EXAMS, COLLEGE TUITION & FEES, TUITION FOR CONCURRENT ENROLLMENT, ADVANCED PLACEMENT FEES**
  - **GOV. FALLIN & USDE NOMINEE BETSY DEVOS – ARDENT SUPPORTERS**
- SEN. NATHAN DAHM – PUBLIC EMPLOYEES UNABLE TO LOBBY AGAINST GUN RIGHTS EXPANSION
- SEN. JOSEPH SILK – CHANGE CONSTITUTION SO OKLAHOMA CAN SECEDE FROM THE U.S.
- REP. BOBBY CLEVELAND – OPEN TRANSFER & IMMEDIATE ELIGIBILITY FOR ATHLETES
- EXPECT MANY BILLS ON GUNS, ABORTION, WIND FARM PROFITS
- NOT HEARING MANY BILLS ON TAX CREDITS/INCENTIVES



Figure 1

## Per-Student Spending Remains More Than 10% Lower Than 2008 in 13 States

Percent change in spending per student, inflation-adjusted, FY08 to FY14



Sources: CBPP budget analysis and National Center for Education Statistics enrollment estimates.

Center on Budget and Policy Priorities | cbpp.org

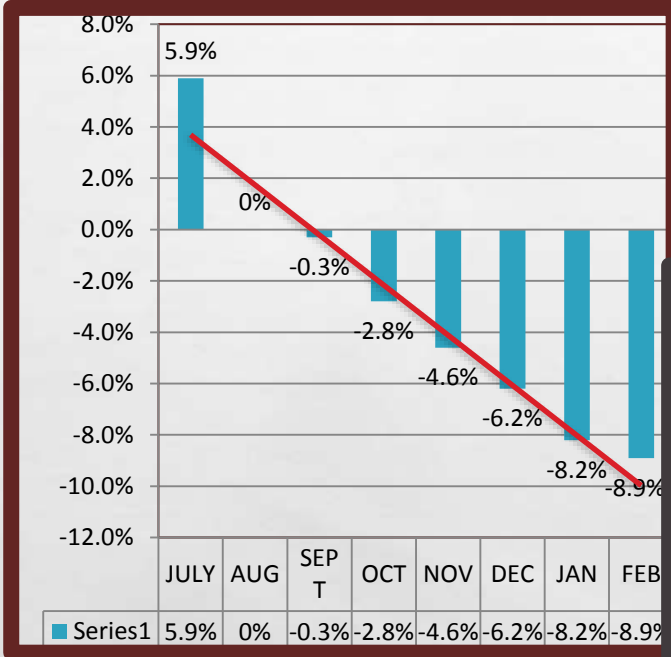
## Per-student Spending Remains More than 10% Lower Than 2008 in 13 States – Percent change in spending per student, inflation-adjusted, FY08 to FY14

### Oklahoma is #1 – 22.8% drop in per student spending! About \$1million for Hilldale.

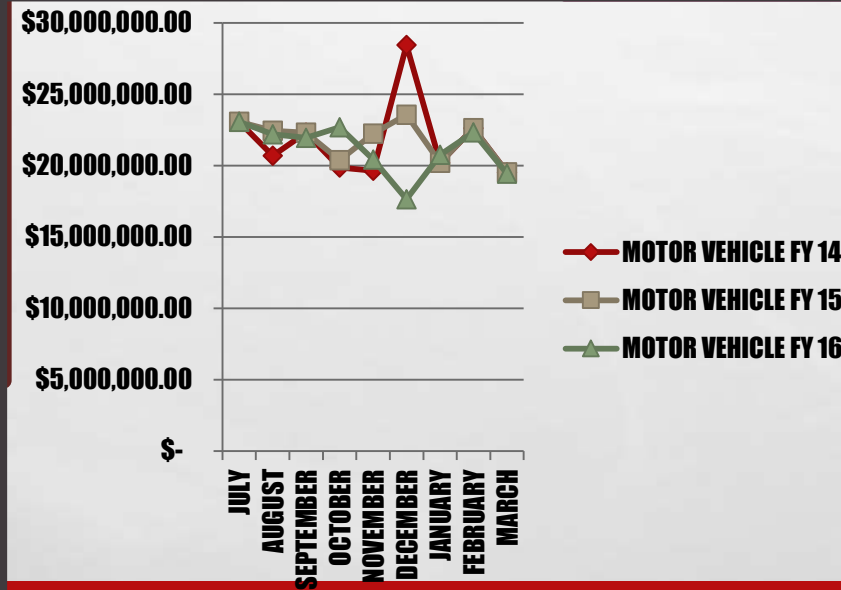
Sources: CBPP budget analysis and National Center for Education Statistics enrollment estimates  
Center on Budget and Policy Priorities / [cbpp.org](http://cbpp.org)

# STATE REVENUE

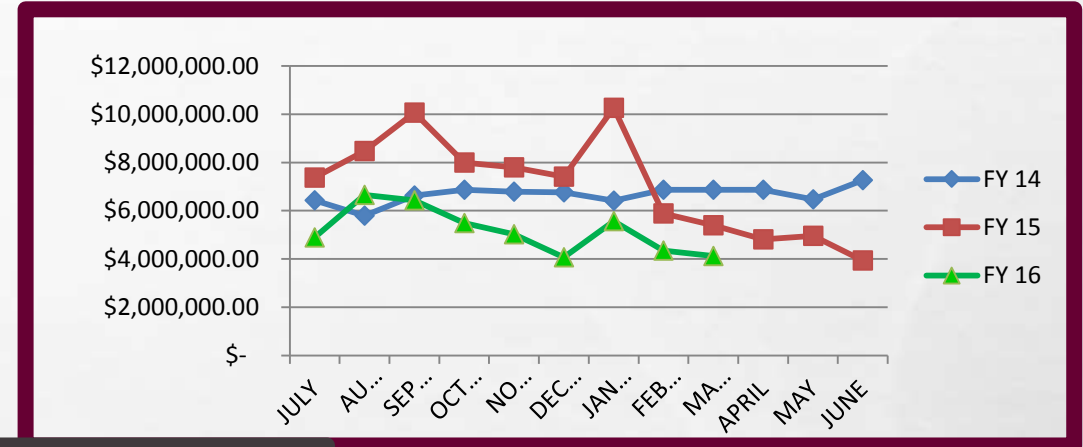
## 2016 General Revenue Failure



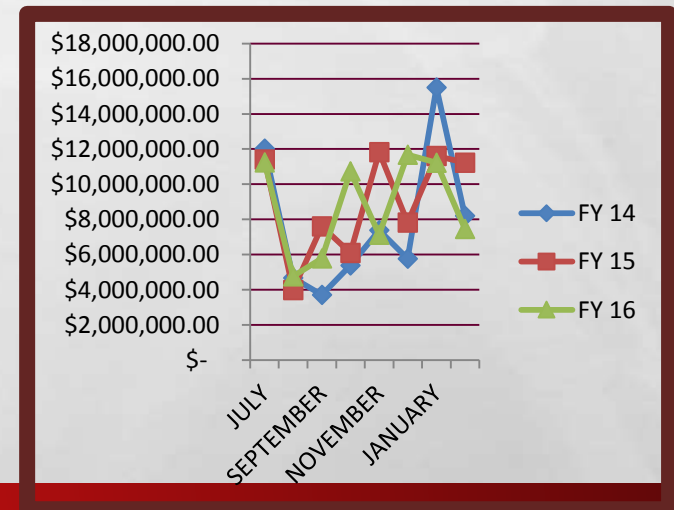
## Motor Vehicle Tax



## Gross Production



## School Land Earnings



# **WHAT ARE SOME OF THE SOLUTIONS?**

- **STATE REVENUE INCREASES**
- **POTTAWATTAMIE COUNTY – SALES TAX FOR SCHOOL OPERATIONAL EXPENSES**
- **LOCALLY – MORE STRINGENT USE OF FEDERAL FUNDS TO SAVE GENERAL FUND; BOND ISSUES**
- **PRESS YOUR ELECTED OFFICIALS!!**



# SO WHAT MONEY DO WE HAVE?

- **TYPES OF SCHOOL MONEY – GENERAL, BUILDING, ACTIVITY, BOND**
  - **BUILDING FUND – COMPRISED OF FUNDS FROM SDE FOR MAINTENANCE OF *FACILITIES ONLY***
  - **ACTIVITY FUND – LOCAL FUNDS RAISED FOR SPECIFIC, BOARD APPROVED PURPOSE; *NOT FOR SALARY***
  - **BOND FUND – LOCALLY VOTED ADDITIONAL TAX; CAN ONLY BE SPENT ON FACILITIES, TRANSPORTATION, TEXTBOOKS, TECHNOLOGY, ETC.; THINK OF IT LIKE A HOUSE LOAN; *NOT FOR SALARY***
  - **GENERAL FUND – COMPRISED OF STATE AID (MOST LOCAL AND FEDERAL REVENUE RUN THROUGH GF); THE MAIN FUNDING SOURCE FOR EXPENDITURES, ESPECIALLY *SALARY*; THIS IS WHAT YOU HEAR ABOUT BEING CUT; FUNDS ALLOCATED TO THE SDE FROM THE LEGISLATURE FOR DISSEMINATION TO DISTRICTS; WE ARE HEAVILY RELIANT ON STATE AID IN OUR GENERAL FUND.**
    - **CHILD NUTRITION – COMPRISED OF STATE, FEDERAL AND LOCAL FUNDS; CAN ONLY BE SPENT ON CHILD NUTRITION, INCLUDING *SALARIES* OF THOSE PROVIDING SERVICES**
    - **FEDERAL IS REIMBURSABLE, VERY SPECIFIC PURPOSE SUBJECT TO SDE/FEDERAL APPROVAL, *SOME SPECIFIC SALARY* CAN BE PAID**
- **AMOUNT OF STATE AID VARIES, DISTRICT TO DISTRICT, DUE TO STUDENT POPULATION AND OFF-SET WITH LOCAL AD VALOREM (CHARGEABLES)**

# HILDALE'S FINANCES

- **WHERE ARE WE AS A DISTRICT? APPROX \$12 MIL BUDGET**
  - **SALARY/BENEFITS = 76%**
  - **STATE FUNDS = 65.2%**
  - **LOCAL FUNDS = 25.7%**
  - **FEDERAL FUNDS = 9.2%**
- **STATE AID IS BASED ON PER WEIGHTED ADM (OURS IS 2921.16)**
  - **EXAMPLE: A PRE-K STUDENT = 1.3 X \$3000 = \$3,900**  
**A PRE-K/AUTISTIC/LSE/ELL STUDENT = 4.2 X \$3000 = \$12,600**
- **THEN THE STATE TAKES AWAY OUR CHARGEABLES (\$1,903,616 IN 2016)**
- **AS OF 7/8/16, OUR STATE AID IS \$6,037,898 – TO GENERAL FUND**

# **THE GOOD NEWS!**

- **WE HAVE BEEN VERY GOOD STEWARDS OF DISTRICT MONEY!**
- **CARRY-OVER – MAXIMUM 14% (WITH SOME EXCLUSIONS)**
  - **WE WENT UP \$300,000 LAST YEAR**
  - **TRY TO HIT CLOSE TO THE MAXIMUM EVERY YEAR**
- **WE ARE OK...BUT WE CAN'T STAY THAT WAY WITH CONTINUED CUTS. EVERY \$ WE DON'T GET EATS INTO THE "SAVINGS ACCOUNT" WHICH IS NOT REPLENISHED!**
- **WE WILL FINISH THIS YEAR SOLVENT, BECAUSE.....**

# **WE HAVE BEEN CUTTING! 2014-16**

- **ADMINISTRATION – 1.5 POSITIONS**
- **TEACHERS – 11.5 POSITIONS**
- **SUPPORT – 11 POSITIONS**
- **REIMBURSE GENERAL FUND FROM OTHER FUNDS -  
\$52,000**

# **ADMINISTRATIVE STRUCTURE**

## **WHY TWO ASSISTANT SUPERINTENDENTS?**

**(STRUCTURE IN PLACE SINCE 2011 – INSTEAD OF MULTIPLE DIRECTORS)**

**NO SPED DIRECTOR**

**NO CHILD NUTRITION DIRECTOR**

**NO FEDERAL PROGRAMS DIRECTOR**

**NO TRANSPORTATION DIRECTOR**

**NO HR/PERSONNEL DIRECTOR**

**NO FACILITIES/MAINTENANCE DIRECTOR**

**NO SHIPPING/RECEIVING COORDINATOR**

**NO ATHLETIC DIRECTOR**

**NO CURRICULUM DIRECTOR**

**NO ASSESSMENT COORDINATOR**

**NO ENROLLMENT DIRECTOR**

**NO BUSINESS MANAGER**

**NO INSTRUCTIONAL COACHES**

**DISTRICT ADMIN: SUPT, TWO ASST SUPT, ONE TECHNOLOGY DIRECTOR**



# WHAT'S OUR 2013 BOND SITUATION?

- **\$7.9 MILLION APPROVED; RAISED TAXES \$1.60 MONTHLY FOR EVERY \$100 OF PROPERTY TAXES**
- **WE HAD QSCB FUNDS PAYING MOST OF THE INTEREST (\$1.7 MIL)**
- **\$7.2 MILLION EXPENDABLE FUNDS**
- **COMPLETED: ELEMENTARY CAFETERIA/SAFEROOM, PARKING LOT REMODEL, MS-HS KITCHEN, MS DINING/SAFEROOM, HS DINING, MS-HS BAND/SAFEROOM, MS CLASSROOMS**
- **ALMOST 1% UNDER ORIGINAL BUDGET &&& SAFEROOMS NOT ORIGINALLY INCLUDED**
- **DOES NOT PAY OFF UNTIL JULY 2024**

# **SO.....WHAT WILL THIS BOND ISSUE COST TAX PAYERS?**

**FOR EVERY \$100 ON A TAX BILL, COST IS \$1.20 PER MONTH**

- **FOR \$500 ON TAXES LAST YEAR, \$6/MONTH, \$72/YEAR**

# SO.....WHAT WILL THIS BOND ISSUE DO FOR US?

## **PAY FOR THINGS THAT NOW COME OUT OF GENERAL FUND**

- **TEXTBOOKS – LOST ALMOST \$100,000 THIS YEAR**
- **TECHNOLOGY – IT'S CYCLIC! MANY ITEMS STARTING TO “DIE”**
- **SECURITY – PRIMARILY MAINTAINING SECURED DOORS**
- **BUSES – NEED TO BUY 1-2 NOW**

**PROVIDE NEW & REMODELED FACILITIES – *REMEMBER THE FOLLOWING ARE JUST RENDITIONS – NOT FINAL DRAWINGS***

# ELEMENTARY



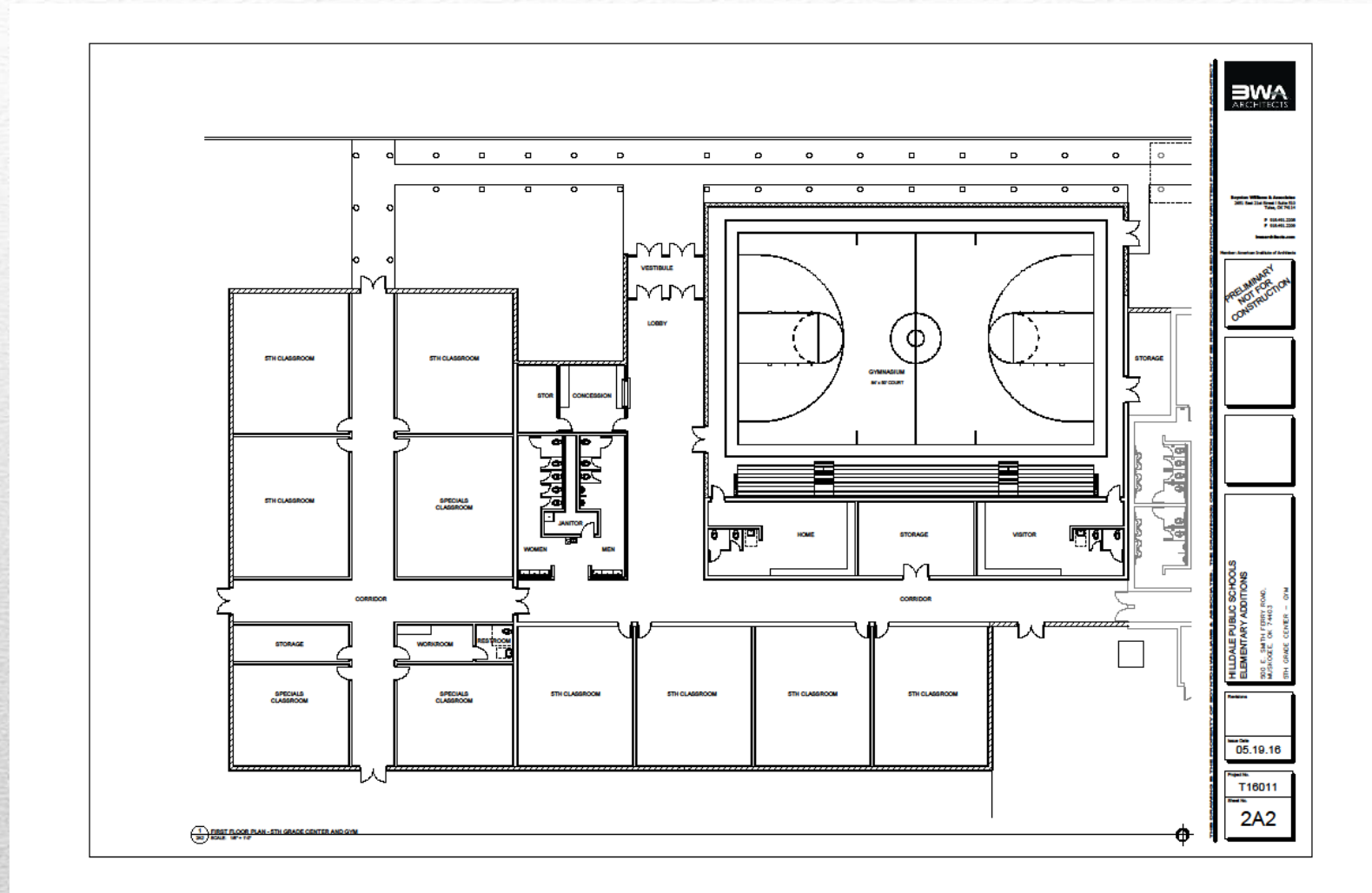


# **New Elementary Gymnasium and Classrooms**





# New Elementary classrooms/gym



Attached on the west side of the new cafeteria

# ELEMENTARY ENTRANCE





# New Elem secured entrance/admin



# New Elem secured entrance/admin



**Centralizes administration and entrance, connects elementary buildings allowing students to remain inside going between buildings**



# ALL SPORT BUILDING



**Soccer Teams  
now have no  
locker room  
and currently  
dress in MS  
restrooms**







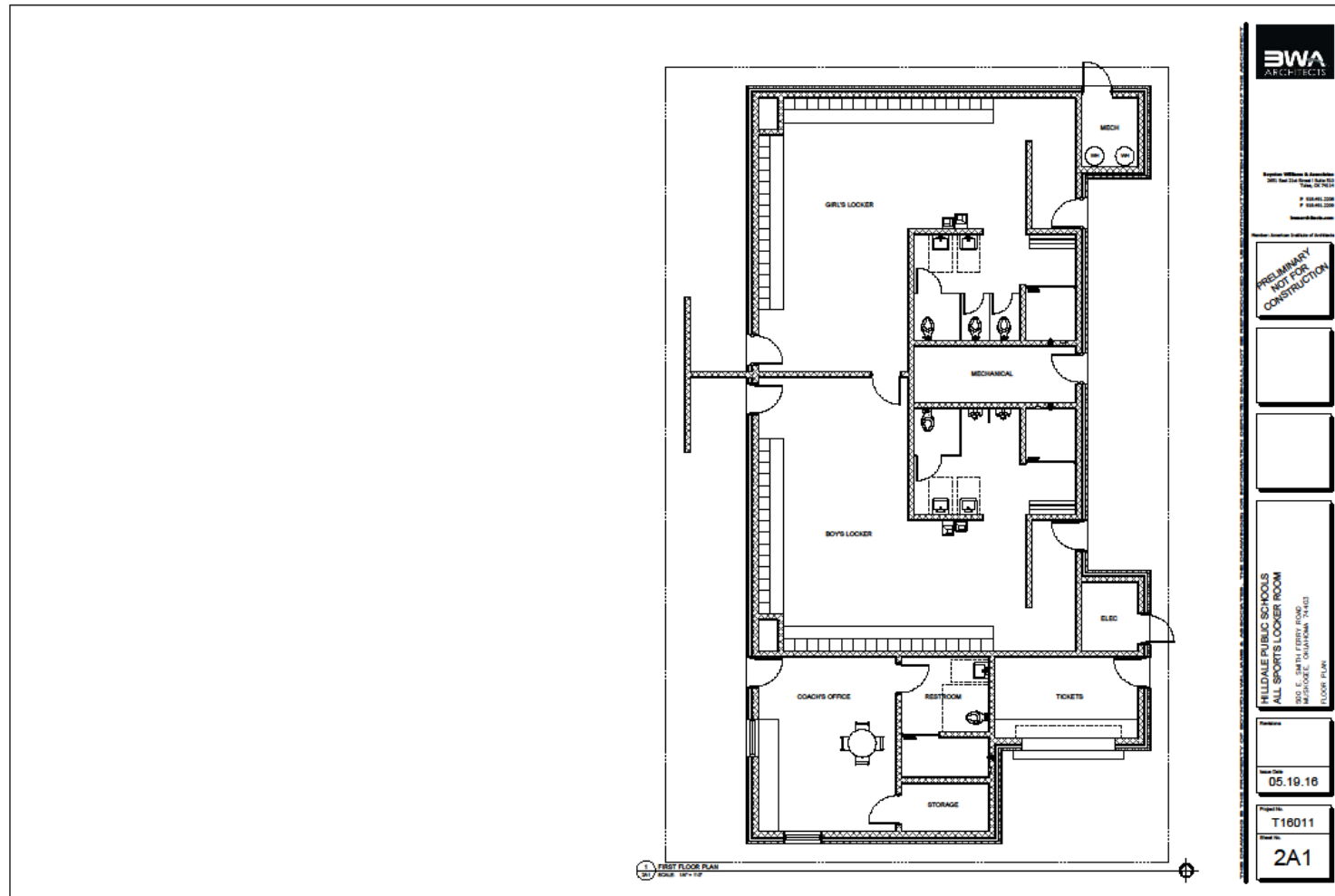
A Professional Corporation  
Member American Institute  
of Architects  
2001 FIRST STREET WEST  
SUITE 300  
TULSA, OK 74114  
918.487.2020  
918.487.2028

HILLDALE PUBLIC SCHOOLS  
ALL SPORTS LOCKER ROOM  
500 E. SMITH FERRY ROAD  
MUSKOGEE, OKLAHOMA 74403

Issue Date  
5.13.18  
Project No.  
119011

Drawing No.  
ELEV

# New All Sport Building



**New building east of the visitors stands at football – provides soccer locker areas and visitor football dressing areas**



# BASEBALL/SOFTBALL





A Professional Corporation  
Member: American Institute  
of Architects  
2811 AVANT 21ST ST SUITE  
100-100  
TULSA, OK 74114  
918-481-2200  
FAX 918-481-2208

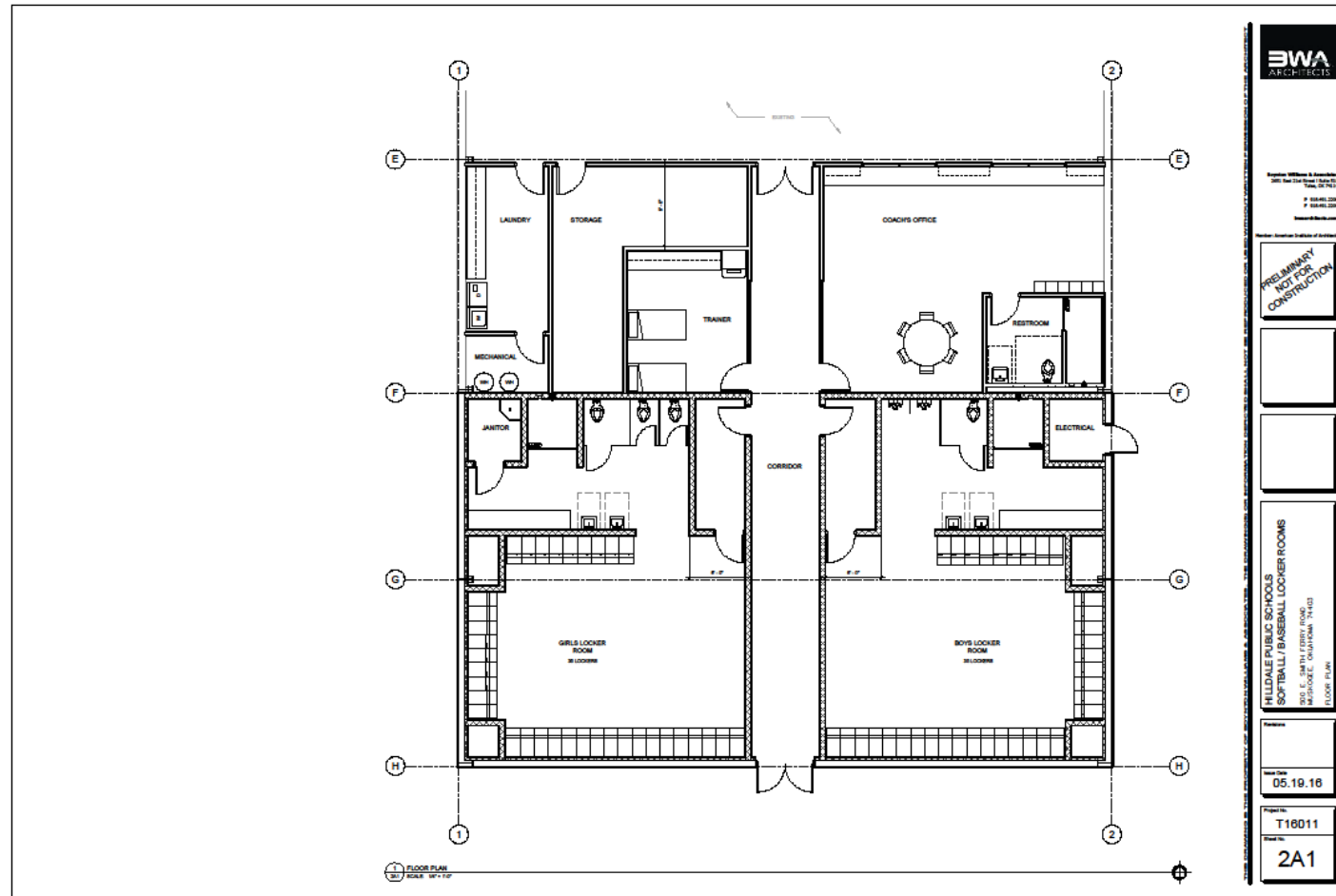
HILDALE PUBLIC SCHOOLS  
SOFTBALL / BASEBALL LOCKER ROOMS  
500 E. SMITH FERRY ROAD  
MUSKOGEE, OKLAHOMA 74403

Issue Date  
05.19.16  
Project No.  
T16011

Drawing No.  
ELEV



# Remodeled Softball/Baseball Facilities



**Enlarged locker rooms/restrooms/offices, added training/equipment area**



**SO.....**

**QUESTIONS? COMMENTS??**

**CONCERNS???**

# **SUGGESTIONS FOR COMMUNICATING TO OUR PUBLIC??**

**THANK YOU, THANK YOU, THANK YOU!!!**

**WE SO APPRECIATE YOUR TIME AND INPUT!**